

SWIVEL LIFTING MAGNET

SAV 531.99-CML

Use :

For lifting and transporting loads up to 95kg.
Manual activation by rotating the handle at 180°.
Swivel lifting eye.

Features :

- Powerful Neodymium magnets ensure optimal lifting capacity even on raw parts
- Lever locking system in magnetic position
- The breakout force is at least 3 times greater than the nominal lifting capacity
- Compact, robust and reliable

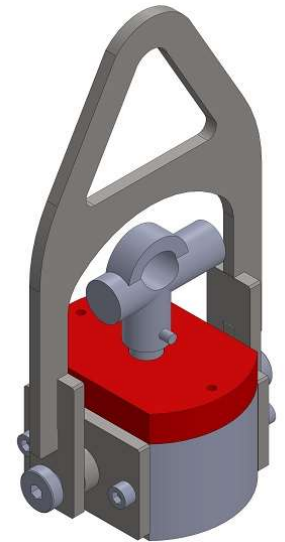
Type		CML95
Horizontal nominal lifting capacity*	kg	95
Vertical nominal lifting capacity*	kg	20
Base length x width	mm	90x62
Height	mm	230
Weight	kg	2,9

*Maximum weight for S235JR steel parts with smooth contact surfaces. Lifting capacity varies depending on the type of material, the thickness of the part, the size and quality of the surface in contact.

Example of order :

Swivel lifting magnet

SAV 531.99 - CML95



SWIVEL MAGNETIC HANDLE

SAV 531.99-P

Use :

For transporting flat and cylindrical parts.
Do not magnetize before contact with the load!
Manual activation by rotating the handle 180°.

Features :

- Swivel ergonomic handle
- Powerful Neodymium magnets
- Compact, robust and reliable

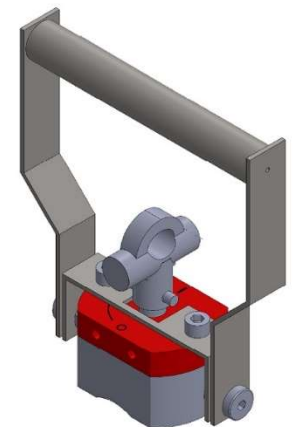
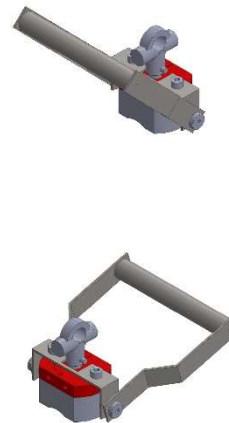
Type		P30	P100
Nominal lifting capacity*	kg	30	100
Breaking away force*	kg	100	300
Thickness for maxi. force	mm	10	25
Magnetic surface	mm	60 x 44	90 x 62
Total height	mm	150	200
Weight	kg	1,6	3,5

*Maximum weight for S235JR steel parts with smooth contact surfaces. Lifting capacity varies depending on the type of material, the thickness of the part, the size and quality of the surface in contact.

Exemple de commande:

Poignée magnétique pivotante

SAV 531.99 - P30



POIGNEE MAGNETIQUE FIXE

SAV 531.99-PF

Use :

For transporting flat and cylindrical parts.
Do not magnetize before contact with the load!
Manual activation by rotating the handle 180°.

Features :

- Ergonomic handle
- Powerful Neodymium magnets
- Compact, robust and reliable

Modèle		PF30	PF100
Force nominale de levage*	kg	30	100
Capacité à l'arrachement*	kg	100	300
Epaisseur force max.	mm	10	25
Surface magnétique	mm	60 x 44	90 x 62
Hauteur totale	mm	150	200
Poids	kg	1,4	3,3

*Maximum weight for S235JR steel parts with smooth contact surfaces. Lifting capacity varies depending on the type of material and quality of the surface in contact.

Exemple de commande:

Poignée magnétique fixe

SAV 531.99 - PF30

