

## MAGNETIC LIFTER FOR ROUND PIECE

SAV 531.01-MR

**Use :**

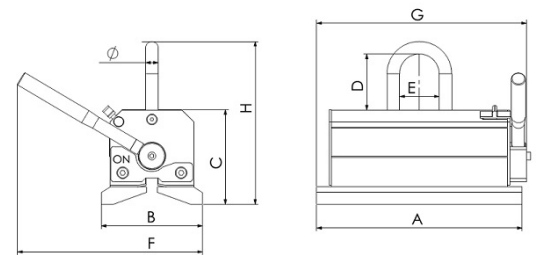
For lifting and transporting loads up to 1800kg  
Manual activation for individual charging

**Features :**

- Powerful Neodymium magnets ensure optimal lifting capacity even on raw parts
- SAV lifting magnets are tested individually
- The safety coefficient is at least 3
- With deep V to ensure the positioning of the rounds
- Easy activation by rotating the lever with safety system
- Compact, robust and reliable



Type		225-MR	450-MR	750-MR	1200-MR	1800-MR
Rated lifting capacity*						
- Flat piece	kg	225	450	750	1200	1800
- Round piece	kg	225	450	750	1200	1800
Mini. Thickness	mm	4	6	10	15	20
Diameter mini/maxi	mm	50-205	50 - 270	70 - 370	120 - 560	120 - 560
A	mm	185	260	332	445	500
B	mm	98	128	166	228	274
C	mm	105	120	150	207	231
D	mm	70	70	100	110	150
E	mm	50	50	80	90	100
F	mm	210	235	350	460	515
G	mm	210	266	353	458	517
H	mm	187	207	270	345	421
∅	mm	12	16	20	25	40
Weight	kg	11,0	22,0	49,0	129,0	212,0



\*Maximum weight for S235JR steel parts with smooth contact surfaces of sufficient size and thickness. The lifting capacity varies depending on the type of material, the thickness of the part, the size and quality of the surface in contact.

**Order example:**

Permanent magnetic lifter  
Designation

SAV 531.01 - 225-MR  
SAV N° - Type

## PORTEUR POUR TOLES FINES

SAV 531.01-MTF

**Use :**

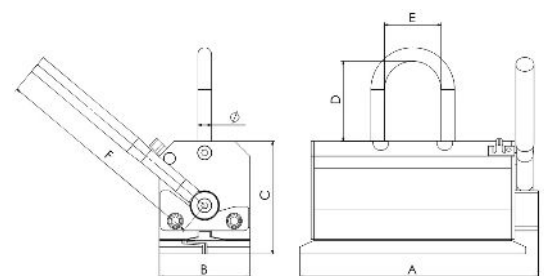
For lifting and transporting thin sheets up to 600kg.  
Manual activation for individual charging

**Features :**

- Powerful Neodymium magnets ensure optimal lifting capacity even on raw parts
- SAV lifting magnets are tested individually
- The safety coefficient is at least 3
- With special pole shoes for thin sheets
- Easy activation by rotating the lever with safety system
- Compact, robust and reliable



Type		180-M-TF	350-M-TF	600-M-TF
Rated lifting capacity*				
- Flat piece	kg	180	350	600
- Round piece	kg	-	-	-
Mini. Thickness	mm	3	4	8
A	mm	210	260	365
B	mm	80	106	145
C	mm	102	110	135
D	mm	70	70	100
E	mm	50	50	80
F	mm	195	195	320
∅	mm	12	16	20
Weight	kg	10,8	20,0	45,0



\*Maximum weight for S235JR steel parts with smooth contact surfaces of sufficient size and thickness. The lifting capacity varies depending on the type of material, the thickness of the part, the size and quality of the surface in contact.

**Order example:**

Permanent magnetic lifter  
Designation

SAV 531.01 - 180-M-TF  
SAV N° - Type