



## SHORT TAPER ADAPTER

To fit circular magnetic chucks to spindle nose

### Use:

Mounting of circular magnetic chucks or other clamping tools to short taper spindle noses of type **DIN 55026 (55021)** form A and B, ISO 702/I A1 and A2, ASA B5.9 A1 and A2.

### Features:

Mild steel adapter in accordance with DIN, ISO and ASA-standards.

Fully prepared on spindle-side. Preparations for chuck side carried out in accordance with customer's requirements (please supply suitable drawing). Rotary magnets can be supplied ready fitted with adapter.

Spindle nose size	A in mm
4*	82,6
4**	85,0
5	104,8
6	133,4
8	171,4
11	235,0
15	330,2

Sizes B, C, and D as well as mounting holes pitch circle according requirements or customer specification.

\* For spindle nose type **DIN 55026**  
 \*\* For spindle nose type **DIN 55021**

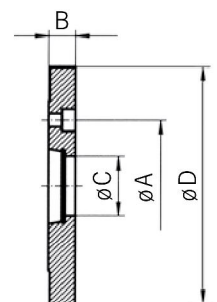
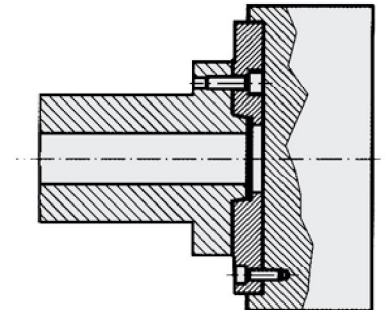
### Ordering example:

Short Taper Adapter without mounting bolts  
 Ordering key

SAV 248.90 - 4 - DIN 55026 and dimensions  
 SAV - No. - Spindle nose size - Technical standard



SAV 248.90



## SHORT TAPER ADAPTER

mit Stehbolzen und Bajonettsscheibe

### Use:

Mounting of circular magnetic chucks or other clamping tools to short taper spindle noses of type **DIN 55027 (55022)** and ISO 702/III

### Features:

Mild steel adapter in accordance with DIN, ISO and ASA-standards with studs and bayonet ring fixing. Fully prepared on spindle-side. Preparations for chuck side carried out in accordance with customer's requirements (please supply suitable drawing). Circular chucks can be supplied ready fitted with adapter.

Spindelkopfgröße	A in mm	Stehbolzenanzahl
4*	82,6	3
4**	85,0	3
5	104,8	4
6	133,4	4
8	171,4	4
11	235,0	6
15	330,2	6

Sizes B, C, and D as well as mounting holes pitch circle according requirements or customer specification.

\* For spindle nose type **DIN 55027**  
 \*\* For spindle nose type **DIN 55022**

### Ordering example:

Short Taper Adapter with Bayonet Ring Fixing  
 Ordering key

SAV 248.91 - 15 - DIN 55027 and dimensions  
 SAV - No. - Spindle nose size - Technical standard



SAV 248.91

